



HENLEY - ON - THAMES

# Transport Guide

— 2026 / 2027 —

# Welcome

## *Dear Parents / Guardians,*

Thank you for taking the time to look at the Rupert House School & St Mary's Prep School bus service for the 2026 / 2027 academic year. This sets out the wide range of travel options available to the pupils at Rupert House School.

We are delighted to be partnered with Vectare, a specialist school transport management company, to manage the school bus service. Vectare will manage all aspects of the school's service, and any enquiries can be directed to their team at via the '**Contact Us**' form on the booking website.

All bookings for school bus routes are made via our online booking system, which can be viewed at **rhsm.vectare.co.uk**.

Payment for the service is made at the time of booking and your child's name will automatically be added to the register. The website also incorporates an interactive journey planner which allows you to enter your postcode and find your closest bus stop.

This guide provides an overview of the school bus service network and contains further details including fare and timetable information.

All bookings for all routes can be made via the dedicated transport website. Other amendments and changes can also be made via the 'my account' section of the website.

If you need any further assistance, or you would like to discuss travel options from areas not currently served by our network, please contact Vectare via the booking website and we will be pleased to assist. I would like to take this opportunity to wish your child a pleasant and successful academic year ahead.

Yours sincerely,

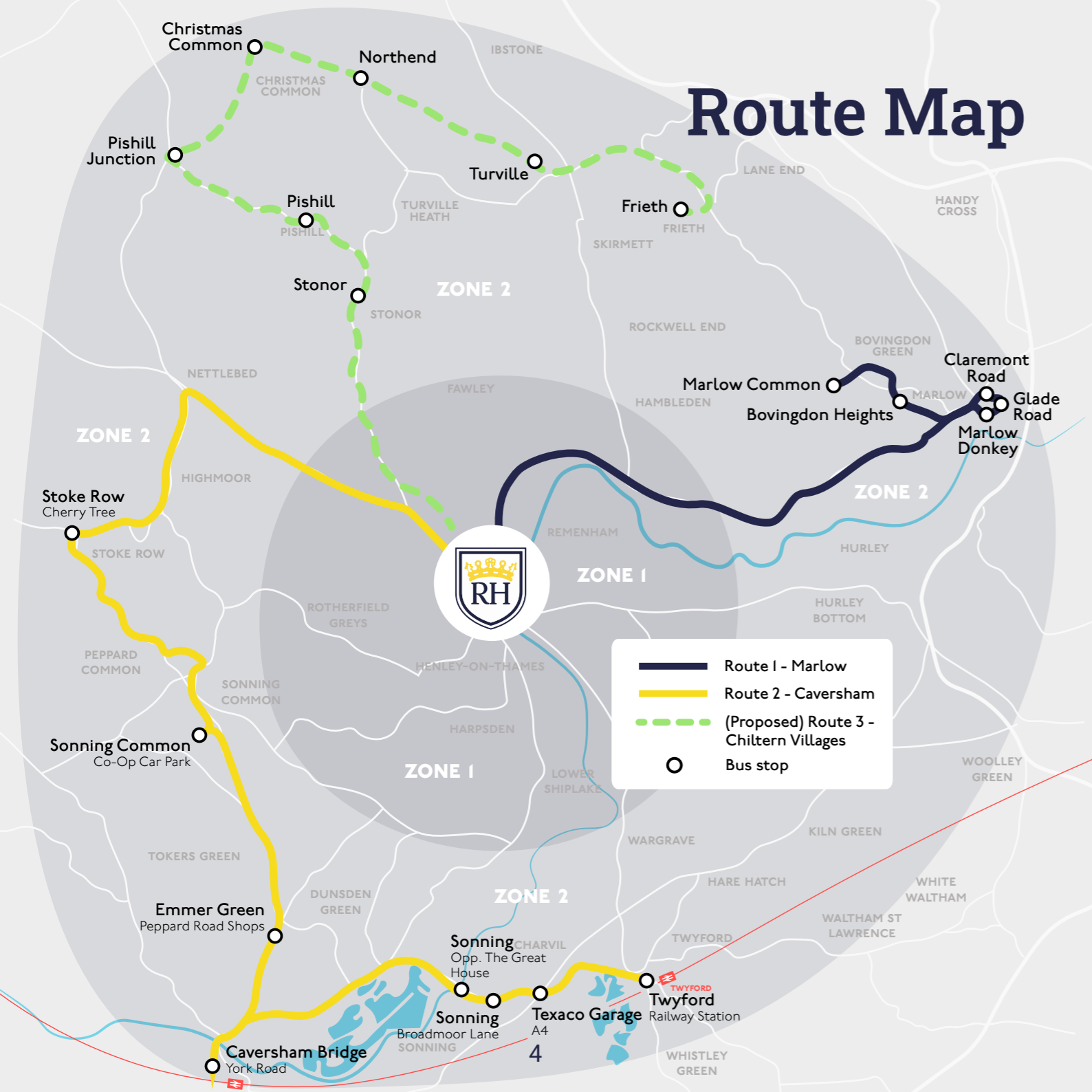
**Rupert House School  
Transport Team**



# Contents

Route Map	4
How to Book	5
Timetables	6
Fares	7
Terms & Conditions	8

# Route Map



# How to Book

- 1** Scan the QR code or go to [rasm.vectare.co.uk](https://rasm.vectare.co.uk) to locate your nearest stop and book regular travel.
- 2** Make your booking and get instant confirmation.
- 3** Contact Vectare via the website if you have any questions.



Scan the QR code to make a booking!

# Timetables

## Route 1 - Marlow

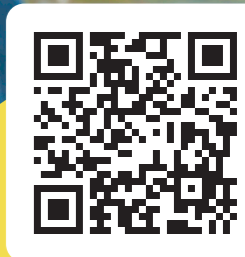
Stops	AM (Mon, Wed, Thur, Fri)	AM (Tue)	PM
Claremont Road	-	07:10	17:18
Marlow Common	07:30	-	17:40
Bovingdon Heights	07:37	-	17:35
Glade Road	07:48	-	-
Marlow Donkey	07:50	-	17:21
Rupert House School	08:15	07:30	17:05

## Route 2 - Caversham

Stops	AM	PM
Twyford Station	-	18:15
A4 - Texaco Garage	07:00	-
Sonning - Broadmoor Lane	07:10	18:06
Sonning - Opp. The Great House	07:13	18:03
York Road - Caversham Bridge	07:20	17:56
Emmer Road - Peppard Road Shops	07:35	17:45
Sonning Common Co-Op Car Park	07:45	17:31
Stoke Row - Cherry Tree	07:58	17:23
Rupert House School	08:15	17:05

# Fares

Zone	Termly Fare	Ad-hoc
<b>Zone 1</b> (30mins and under)	<b>£375</b>	<b>£4.50</b>
<b>Zone 2</b> (over 30mins)	<b>£575</b>	<b>£6.50</b>



Scan the QR code to make a booking!

# Terms & Conditions

1. This agreement is made between all School bus passengers, their parents and Rupert House School in order to provide safe and comfortable journeys for all passengers.
2. Arrangements for pupils' journeys to and from School are the responsibility of their parents. To assist with discharging this responsibility, Rupert House School provides a School bus service.
3. Transport on the School bus service must be arranged in advance for via the online booking platform. If you wish to use the School bus service on an ad hoc basis, or to vary the details of their bus travel as a one-off, you should book travel via the website prior to travel. A charge is levied for individual trips depending on location.
4. Bookings on the School bus service are non-refundable in the event of a pupil failing to travel.
5. Bookings are to be made online via [rhsm.vectare.co.uk](https://rhsm.vectare.co.uk).
6. Each pupil for whom an online form has been submitted will be added to a bus list detailing the service they travel on, their bus stop and what travel has been paid for via the School bill. Their name will appear on a list which will be checked by the driver.
7. It will be the parents' responsibility to inform the School via the '[Contact Us](#)' form on the website if they no longer wish to use the School bus service. A full term's notice must be given by a parent prior to the removal of a pupil from the School Bus Service.
8. No pupil is permitted to travel on the School bus service if not pre-booked for that bus. Other arrangements for journeys to and from School must be made by them or their parents.
9. Pupils must travel to and from Rupert House School in full School uniform or a full School PE kit (except on approved non-uniform days).
10. Pupils should be at the bus stop five minutes before the scheduled time of departure to ensure they don't miss the service. In the evening, parents should be at the bus stop five minutes before the scheduled time of arrival to collect a passenger.
11. Good conduct is required at all times. Bullying, shouting, use of foul language, dropping litter, playing music, or any other misbehaviour is strictly forbidden.
12. Except when embarking or disembarking, all passengers must remain seated with their seatbelts fastened correctly.
13. Whilst on a School bus, all passengers must accept without question the authority of a transport company official or an Abbey staff member who may ask them to obey any reasonable instruction such as to pick up litter, desist from certain actions or to move to a different seat.
14. Failure to comply with these conditions may result in disciplinary action, including temporary or permanent withdrawal of permission to use the School bus service.
15. Rupert House School aims for 95% of journeys to operate within the transport industry window of tolerance of one minute early to five minutes late, however timings may vary due to traffic conditions or unforeseen circumstances. Drivers will not wait past the scheduled departure time.



Scan the QR code to make a booking!



Produced by Vectare for Rupert House School © Vectare 2026. Timetable, route and fare information is correct as of June 2026.

This guide is produced for information only. This is a closed service and is only available to pupils/students (and any authorised persons) who have been approved by the school and added to the route. It is not open to the general public. We cannot be held liable for any errors or omissions or for any loss or damages caused, howsoever arising and including consequential losses, as a result of the use of this Guide. Please note that routes are subject to change.